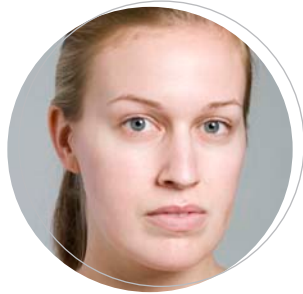


Color Presentation Flier

BEAUTICONTROL®



before



after

concealer: Platinum Regeneration Age Defying Concealer – Medium



wet/dry: N-2



BeautiSet: BEST IN SHOW:



BEST IN SHOW
eye shadow duo

ESPRESSO
eye defining pencil

BABY FACE
blush

SIENNA
lip shaping pencil

PARADISE
lasting lip color



before



after

concealer: Secret AGEnt Coverup Concealer – Medium



wet/dry: N-3



BeautiSet: Park Avenue Princess:



PARK AVENUE PRINCESS
eye shadow duo

MIDNIGHT
eye defining pencil

PINCH ME
blush

MAUVE
lip shaping pencil

RASPBERRY ICE
lasting lip color

mascara: Spectaculash® Maximum Volume Mascara



before



after

concealer: Secret AGEnt Maximum Coverage Concealer – Dark



wet/dry: N-5



BeautiSet: Midnight Cowgirl:



MIDNIGHT COWGIRL
eye shadow duo

ESPRESSO
eye defining pencil

TOOTSIE
blush

SIENNA
lip shaping pencil

GOLDEN BRONZE
lasting lip color

tri-color bronzer: Bronzed Beauti





before



after

Lindsay is wearing:

1. **Platinum Regeneration Age Defying Concealer in Medium.**
With this easy to use stick, fine lines and wrinkles are targeted with advanced anti-aging ingredients while the concealer hides imperfections such as dark circles.
2. **Wet/Dry Foundation— N2.**
Foundation was applied with a dry sponge for medium coverage.
3. **Best in Show Eye Shadow Duo.**
The matte nude shade was applied from lash line to brow and the darker shade was applied to the crease and blended.
4. **Espresso Eye Defining Pencil.**
Tip: For the straightest line you can get, place your index finger near the outer corner of the eye and gently pull skin slightly taut. Using a light stroke, draw a line along the lower and upper lash lines. Start with a narrow line and increase the thickness until you achieve the desired look.
5. **Baby Face Blush — a lightly frosted mauve.**
Applied on the apple of the cheek in line with the center of the eye and blended upward toward the hairline.
6. **Sienna Lip Shaping Pencil**
Lips were lined and filled in with pencil for longer-lasting color.
7. **Paradise Lasting Lip Color.**
Apply straight from the tube or with a lip brush.
8. **Spectaculash Maximum Volume Mascara in Black.**
To make the eyes look bigger, lashes were curled with an eye lash curler before applying two coats of mascara to upper lashes. The tip of the mascara brush was used in a side to side motion when Applying mascara to lower lashes.

1. **concealer:** Platinum Regeneration® Age Defying Concealer – Medium



2. **wet/dry:** N-2



BeutiSet: Best in Show



3. **BEST IN SHOW**
eye shadow duo



4. **ESPRESSO**
eye defining pencil



5. **BABY FACE**
blush



6. **SIENNA**
lip shaping pencil



7. **PARADISE**
lasting lip color

8. **mascara:** Spectaculash® Maximum Volume Mascara





before



after

Jennifer is wearing:

1. **Secret AGEnt Cover Up Concealer in Medium.**
This is a great basic concealer for combination to oily skin types. If you are prone to breakouts, this is the concealer for you
2. **Wet/Dry Foundation— N3.**
Foundation was applied with a dry sponge for medium coverage.
3. **Park Avenue Princess Eye Shadow Duo.**
The matte nude shade was applied from lash line to brow and the darker shade was applied to the crease and blended.
4. **Midnight Eye Defining Pencil.**
Tip: For the straightest line you can get, place your index finger near the outer corner of the eye and gently pull skin slightly taut. Using a light stroke, draw a line along the lower and upper lash lines. Start with a narrow line and increase the thickness until you achieve the desired look.
5. **Pinch Me Blush — a rosy pink.**
Applied on the apple of the cheek in line with the center of the eye and blended upward toward the hairline.
6. **Mauve Lip Shaping Pencil**
Lips were lined and filled in with pencil for longer-lasting color.
7. **Raspberry Ice Lasting Lip Color.**
Apply straight from the tube or with a lip brush.
8. **Spectaculash Maximum Volume Mascara in Black.**
To make the eyes look bigger, lashes were curled with an eye lash curler before applying two coats of mascara to upper lashes. The tip of the mascara brush was used in a side to side motion when Applying mascara to lower lashes.

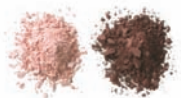
1. **concealer:** Secret AGEnt Cover Up Concealer – Medium



2. **wet/dry:** N-3



BeautiSet: Park Avenue Princess



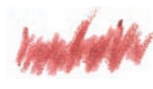
3. **PARK AVENUE PRINCESS**
eye shadow duo



4. **MIDNIGHT**
eye defining pencil



5. **PINCH ME**
blush



6. **MAUVE**
lip shaping pencil



7. **RASPBERRY ICE**
lasting lip color

8. **mascara:** Spectaculash® Maximum Volume Mascara





before



after

Tamara is wearing:

1. Secret AGent Maximum Coverage Concealer in Dark.
This concealer provides maximum coverage for hard to hide imperfections such as chronic dark circles, birthmarks and freckles.
2. Wet/Dry Foundation— N5.
Foundation was applied with a dry sponge for medium coverage.
3. Midnight Cowgirl Eye Shadow Duo.
The frosted taupe shade was applied from lash line to brow and the medium Matte brown shade was applied to the crease and blended.
4. Espresso Eye Defining Pencil.
Tip: For the straightest line you can get, place your index finger near the outer corner of the eye and gently pull skin slightly taut. Using a light stroke, draw a line along the lower and upper lash lines. Start with a narrow line and increase the thickness until you achieve the desired look.

1. concealer: Secret AGent Maximum Coverage Concealer – Dark



2. wet/dry: N-5



BeautiSet: Midnight Cowgirl

3. MIDNIGHT COWGIRL
eye shadow duo



4. ESPRESSO
eye defining pencil



5. TOOTSIE
blush



6. SIENNA
lip shaping pencil



7. GOLDEN BRONZE
lasting lip color



8. tri-color bronzer: Bronzed Beauti



5. Tootsie Blush — a reddish brown shade.
Applied on the apple of the cheek in line with the center of the eye and blended upward toward the hairline.

6. Sienna Lip Shaping Pencil
Lips were lined and filled in with pencil for longer-lasting color.

7. Golden Bronze Lasting Lip Color.
Apply straight from the tube or with a lip brush.

8. Secret AGent Tri-Color Bronzer in Bronzed Beauti.
Tip: First, make sure your face is clean and dry because bronzer will cling to any damp or oily areas and give an uneven look. Apply bronzer with a big fluffy brush to the areas where the sun naturally hits the face—cheekbones, forehead and bridge of the nose.